

# Bev Suits

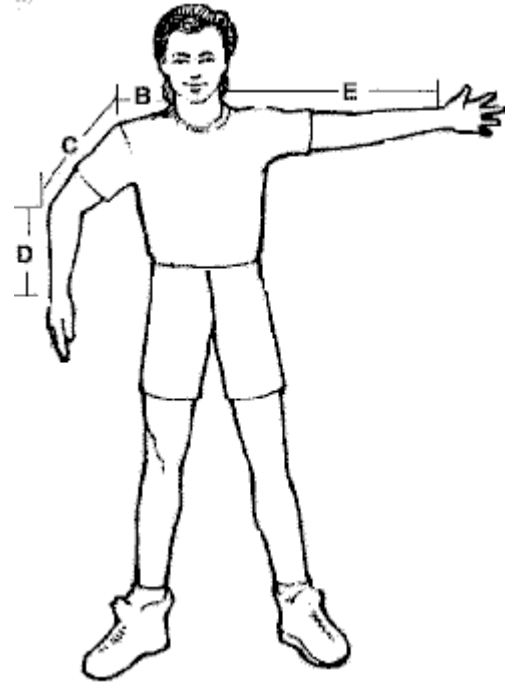
## JACKET

NAME \_\_\_\_\_  
 ADDRESS \_\_\_\_\_  
 CITY \_\_\_\_\_ STATE \_\_\_\_\_ ZIP \_\_\_\_\_  
 PHONE \_\_\_\_\_ EMAIL \_\_\_\_\_  
 Shipping \_\_\_\_\_ Dealer \_\_\_\_\_

Office Use Only	
_____	Receipt Date
_____	Ship Date

**Measurements-** Take measurements with the clothes on you would normally wear to skydive - include shoes.

- A. Around neck \_\_\_\_\_
  - B. Side of neck to shoulder \_\_\_\_\_
  - C. Shoulder to elbow \_\_\_\_\_
  - D. Elbow to wrist \_\_\_\_\_
  - E. Total Arm length –side of neck to wrist \_\_\_\_\_  
 straight arm held horizontal to floor
  - F. Wrist \_\_\_\_\_ Bicep \_\_\_\_\_ Forearm \_\_\_\_\_
  - G. Chest \_\_\_\_\_ Women Only – Cup size \_\_\_\_\_
  - H. Waist \_\_\_\_\_
  - I. Hips \_\_\_\_\_
- Height \_\_\_\_\_ Weight \_\_\_\_\_ Sex \_\_\_\_\_



<i>Price</i>	<i>See Other</i>
<i>Options</i>	
<b>Subtotal</b>	
<b>Rush \$20 / Double \$40</b>	
Pa Residents Add 6% Sales Tax	
<b>US Shipping Ground rate</b>	<b>18.00</b>
Call for other options	
<b>Total</b>	
<b>Balance Due</b>	
<i>Thank you for your order!</i>	

Payment Method: Check Money Order MasterCard Visa Discover

Expiration Date: \_\_\_\_ / \_\_\_\_ (month/year) Security Code \_\_\_\_\_

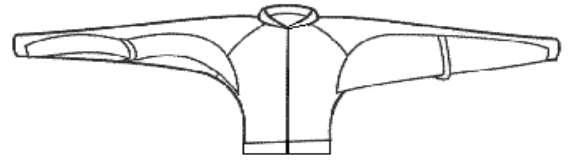
--	--	--	--	--	--	--	--	--	--	--	--	--	--	--	--	--	--	--	--	--

Card Account Number      **4% Service Charge on Credit Card Orders**

\_\_\_\_\_  
 Name of Issuing Bank      Customer Signature

**Sit Style or Skysurf Style \$220.00**

BODY COLOR \_\_\_\_\_  
 ARM COLOR \_\_\_\_\_  
 WING COLOR \_\_\_\_\_  
 TAPE AROUND WING COLOR \_\_\_\_\_  
 \_\_\_\_\_ Small wing if used for freestyle or skysurfing



**Camera Jacket with RSL clips \$ 250.00**

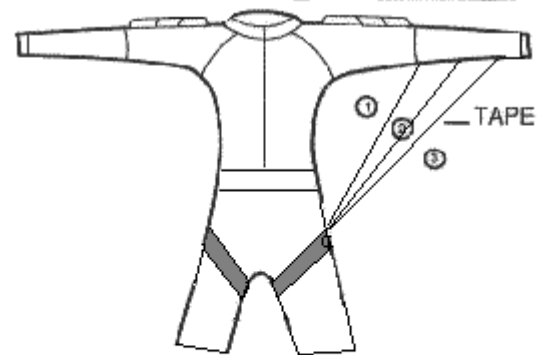
TORSO / COLOR \_\_\_\_\_  
 WING COLOR / SIZE \_\_\_\_\_  
 \_\_\_\_\_ Small (1)  
 \_\_\_\_\_ Medium (2)  
 \_\_\_\_\_ Large (3)

Without RSL Clips \$230.00 Grippers \$20 \_\_\_\_\_ Color: \_\_\_\_\_

TAPE COLOR - edge of wing \_\_\_\_\_

FOREARMS / COLOR \_\_\_\_\_  
 Polycotton forearm with punch thru cuff

FRONT



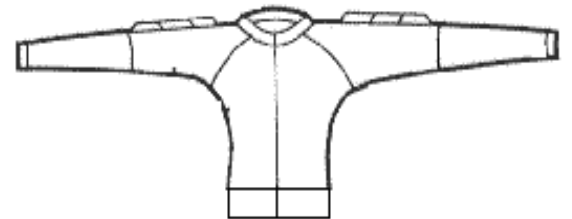
**Freely Jacket \$ 170.00**

**COLOR ON FRONT:** \_\_\_\_\_ **COLOR ON BACK:** \_\_\_\_\_  
 ARM (Upper) \_\_\_\_\_ ARM (Upper) \_\_\_\_\_  
 ARM (Lower) \_\_\_\_\_ ARM (Lower) \_\_\_\_\_  
 TORSO \_\_\_\_\_ TORSO \_\_\_\_\_  
 Velcro Zipper Tab Included Grippers \$20 \_\_\_\_\_



**Competition Style Jacket \$ 180.00**

**Grippers included**  
 TORSO COLOR \_\_\_\_\_  
 FOREARM COLOR \_\_\_\_\_  
 GRIPPER COLOR \_\_\_\_\_ TAPE COLOR \_\_\_\_\_  
 GRIP STRIPES \_\_\_\_\_ 2 STRIPES 15.00 \_\_\_\_\_ 2 STRIPES w/PIN 17.00  
 BACK COLOR \_\_\_\_\_ ( Grippers included )



**ALL JACKETS (FABRIC AND OPTIONS)**

FABRIC:  
 \_\_\_\_\_ Nylon \_\_\_\_\_ 2 Stripes on Arms \$40.00  
 \_\_\_\_\_ Polycotton  
 \_\_\_\_\_ Supplex  
**Spandex** waistband, collar, and cuffs color \_\_\_\_\_  
 \_\_\_\_\_ Coolmax lining \$18.00 \_\_\_\_\_ Lining \$15.00  
 \_\_\_\_\_ Extra Pocket \$10.00 Location: \_\_\_\_\_

Jackets have a standard inside left chest pocket  
**Special Instructions** \_\_\_\_\_

\_\_\_\_\_  
 \_\_\_\_\_